



Preparing Images for DPI Competitions using Adobe LightRoom

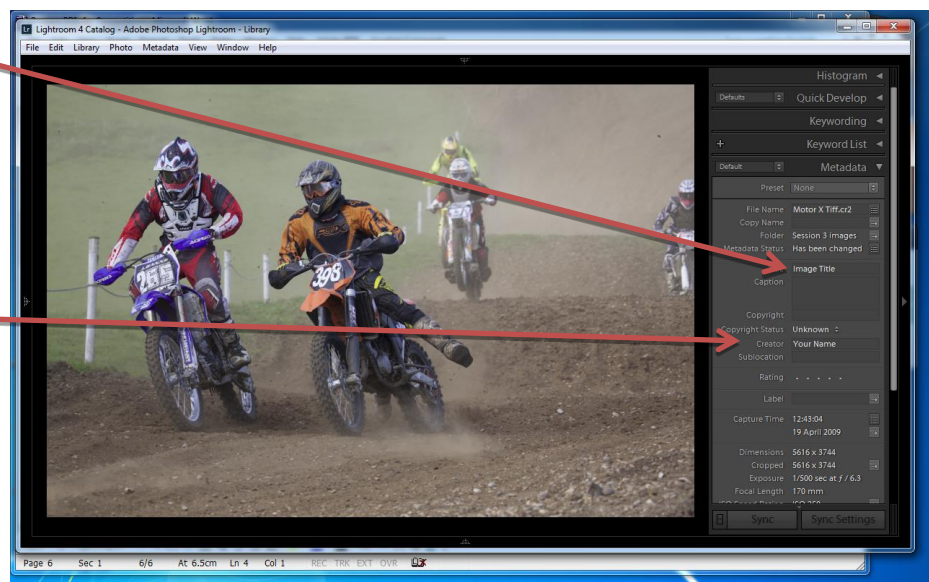
After you have finished all your adjustments, image manipulations and cropping before doing anything else **Save this image file** then:

**Change Size to fit within a size of 1600 pixels maximum width by 1200 pixels maximum height:
(note that these are maximums and neither dimension should be exceeded)**

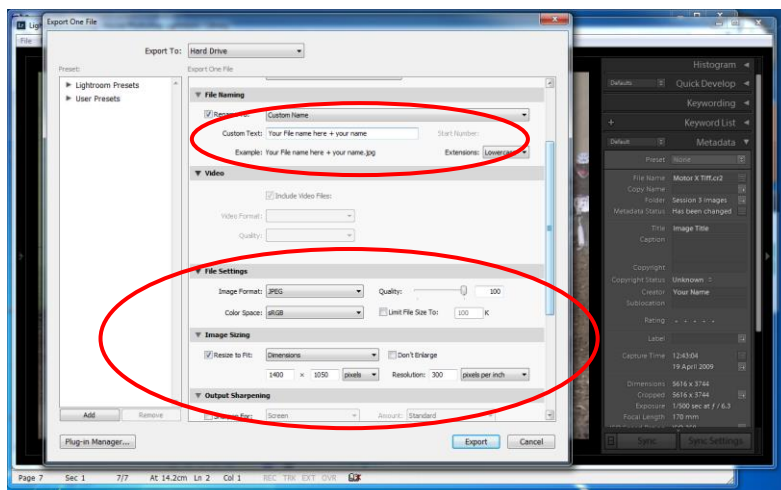
You now need to add the EXIF data so that the Competition Secretary can display your image and record your score. From the top menu bar select File, then File Info:

Insert your image title here

Insert your name here and ALWAYS use the same format for all future entries. This is important because it allows the software to automatically maintain an accurate record of your cumulative



Then Export your image to a suitable location on your computer (undertaken by right-mouse click on the image as follows):



NOW FINALLY DOUBLE-CHECK THAT ALL IS OKAY.